

Enamel is the most suitable material for kitchen equipment.

珐琅是厨房设备最理想的材料



## Special Merits 特点



The hard and smooth surface allows smear to be quickly wiped off, thus ensuring everlasting cleanliness.

表面坚硬平滑，脏污容易擦掉，从而可常保清洁。



Enamel is not damaged even by rubbing wire brush.

即使使用钢丝刷擦洗，珐琅也不会受损。



Enamel does not fade or change in color even if exposed to high temperatures.

即使经受高温，珐琅也不会褪色或变色。



The base of the Kitchen Panel is made of metal and magnets can be attached.

Various kinds of small magnet items convenient to be attached to the high-grade porcelain enamel are available.

因基材为金属，可使用磁铁。

在此为您准备了多种多样的便利的磁铁小饰物，可以粘贴在高品质的珐琅上。

## Color Variations 颜色种类

### P type

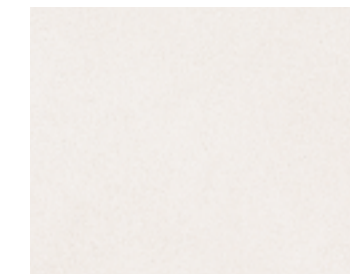
Decorative pattern panel 加饰面板



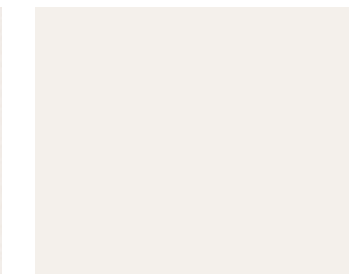
PSK:WHITE  
(with modern pattern)



PSM:WHITE  
(with mosaic pattern)



MGN:MARBLE GRAY



PCN:PURE GRAY



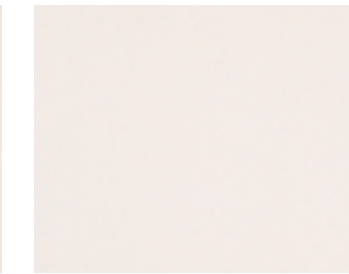
PSH:WHITE  
(with ribbon pattern)



PSS:WHITE  
(with stained pattern)



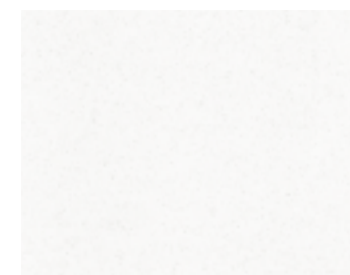
MBN:MARBLE BEIGE



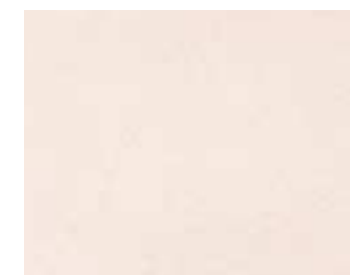
PIN:PURE IVORY

### H type

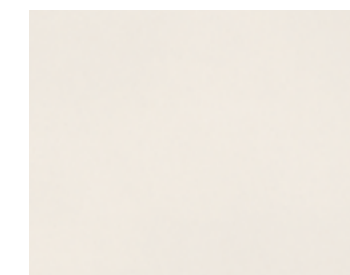
Roche panel



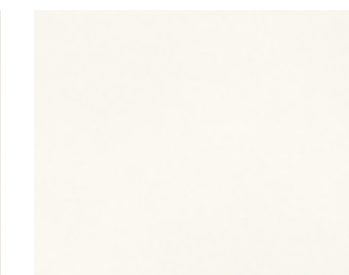
HRW:ROCHE WHITE



HRB:ROCHE BEIGE



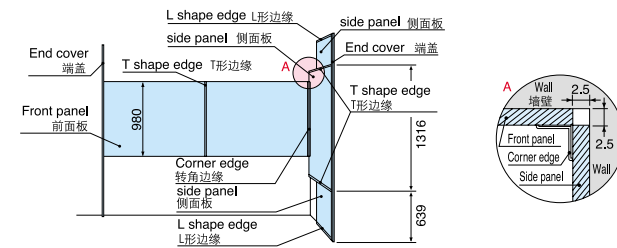
HNB:LIGHT BEIGE



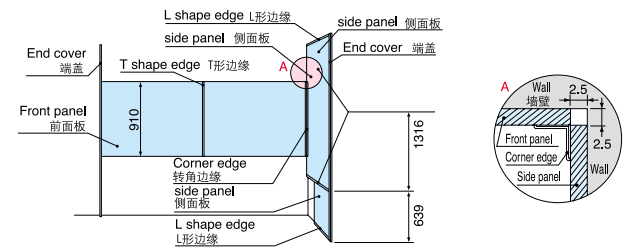
HNW:MILD WHITE

## Installation example 安装例

### ●P type



### ●H type



### P type

Front Panel 正面墙壁贴板		Side Panel 侧面墙壁贴板	
Model Number 编号	Size 尺寸	Model Number 编号	Size 尺寸
PZF-60 (□)	599×980mm	PZS-90 (□)	900×1316mm
PZF-90 (□)	899×980mm		600×684mm
PZF-120 (□)	1199×980mm		600×639mm
PZF-135 (□)	1349×980mm		
PZFH-105 (□)	1049×1100mm		

### H type

Front Panel 正面墙壁贴板		Side Panel 侧面墙壁贴板	
Model Number 编号	Size 尺寸	Model Number 编号	Size 尺寸
HZF-185 (□)	1849×910mm	HZZ-71 (□)	710×1849mm
HZF-135 (□)	1349×910mm		200×1849mm
HZF-120 (□)	1199×910mm	HZZ-91 (□)	910×1849mm
HZF-90 (□)	899×910mm		